



# Sore Knees?

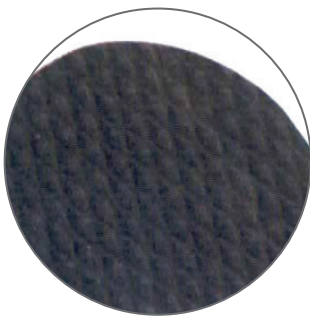
## Hog Heaven Anti-Fatigue Mats

- ✓ Static Dissipative
- ✓ Welding Safe
- ✓ Chemical Resistant
- ✓ Recycled Content

Most people think of anti-fatigue as just something to “make the floor softer”. Experts tell us that well-designed anti-fatigue matting can do much more. Any employee who is required to stand for extended periods is subject to becoming distracted with the discomfort that can result from the incorrect type of support underfoot.

Hog Heaven anti-fatigue mats are firm enough to hold up to the long-term wear and tear of daily use while providing enough cushioning to relieve stress and discomfort.

- ✓ **Comfortable:** High-density nitrile-blended cushion helps eliminate pressure to the lower back and legs, providing superior comfort.
- ✓ **Safe:** Certified high-traction by the National Floor Safety Institute (NFSI); sloped edges provide a safe transition from floor to mat.
- ✓ **Durable:** Nitrile-blended cushion provides years of useful service life; cushion is molded, not glued, to the nitrile rubber surface so it will not separate; edges will not crack or curl.
- ✓ **Versatile:** Welding safe; ESD\* rating of electrically conductive; chemical resistant; surface is grease/oil proof and cushion is grease/oil resistant.



Solid Black

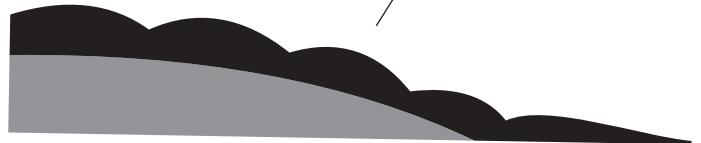


Caution Yellow



Solid 100% nitrile rubber top surface

Beveled edges on all four sides for added safety.



Premium nitrile cushion

### HOG HEAVEN ANTI-FATIGUE:

#### Standard Sizes

2' x 3', 3' x 5', 3' x 12', 4' x 6', 5' x 8'

#### Custom Sizes

- Width: 2' (21"), 3' (33"), 4' (46"), 5' (58")
- Length: up to 60' maximum
- Thickness: 5/8" and 7/8"

Sizes may not be exact and are subject to a 3% variance due to manufacturing processes.



CERTIFIED ANTI-SLIP BY THE NATIONAL FLOOR SAFETY INSTITUTE

\*ESD - ELECTROSTATIC DISCHARGE

**INCREASE EMPLOYEE PRODUCTIVITY AND POSITIVE MORALE WITH HOG HEAVEN ANTI-FATIGUE MATS.**

### Contact Applifast

Tel 204 837 8361 • 1 800 563 1293  
info@applifast.com

applifast.com

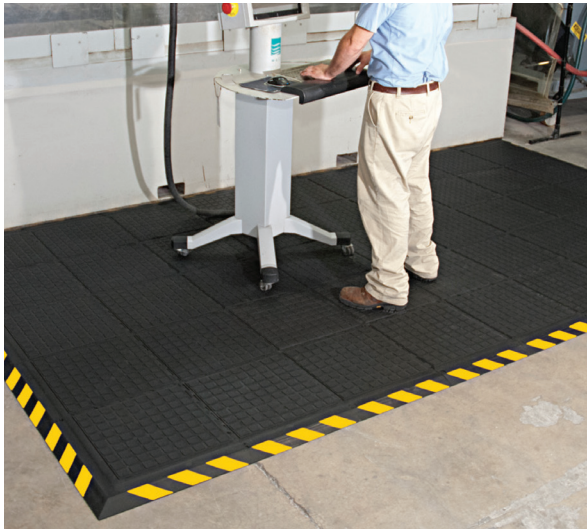


## Hog Heaven III Comfort Modular Tiles

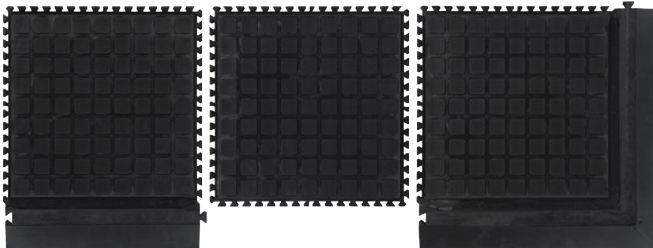
Hog Heaven Modular Tile anti-fatigue mats are firm enough to hold up to the long-term wear and tear of daily use while providing enough cushioning to relieve stress and discomfort.

- ✓ Linkable
- ✓ Static Dissipative
- ✓ Chemical Resistant
- ✓ Modular with Wedge Lock
- ✓ Welding Safe
- ✓ 20% Recycled Nitrile Rubber

Most people think of anti-fatigue as just something to “make the floor softer”. Experts tell us that well-designed anti-fatigue matting can do much more. Any employee who is required to stand for extended periods is subject to becoming distracted with the discomfort that can result from the incorrect type of support underfoot.



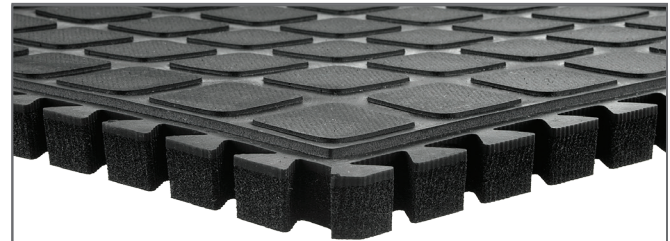
### HOG HEAVEN III MODULAR TILE COMFORT



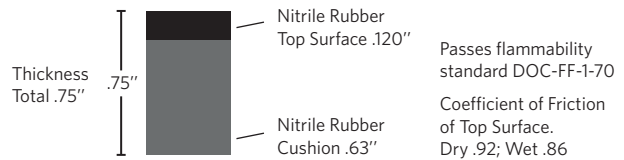
Modular Tile  
Side

Modular Tile  
Middle

Modular Tile  
Corner

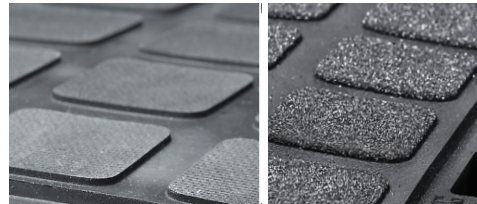


### Hog Heaven III Modular Tile Comfort



**BORDERS** • Solid Black • Caution Yellow Striped

**SURFACES** • Tread • Tread with Grit



CERTIFIED ANTI-SLIP BY THE NATIONAL FLOOR SAFETY INSTITUTE

### MAT SIZES

- 18" Center Tile: 18" x 18"
- 18" Side Tile: 18" x 21.875"
- 18" Corner Tile: 21.875" x 21.875"
- 36" Center Tile: 36" x 36"
- 36" Side Tile: 36" x 39.875"
- 36" Corner Tile: 39.875" x 39.875"

ESD\* rating of electrically conductive; chemical resistant; surface is grease/oil proof and cushion is grease/oil resistant.

Sizes may not be exact and are subject to a 3-5% variance due to manufacturing processes.

### HOG HEAVEN III LINKABLE MATS COMFORT



Linkable Mat  
End

Linkable Mat  
Middle

Linkable Mat  
End

## Contact Applifast

Tel 204 837 8361 • 1 800 563 1293  
info@applifast.com